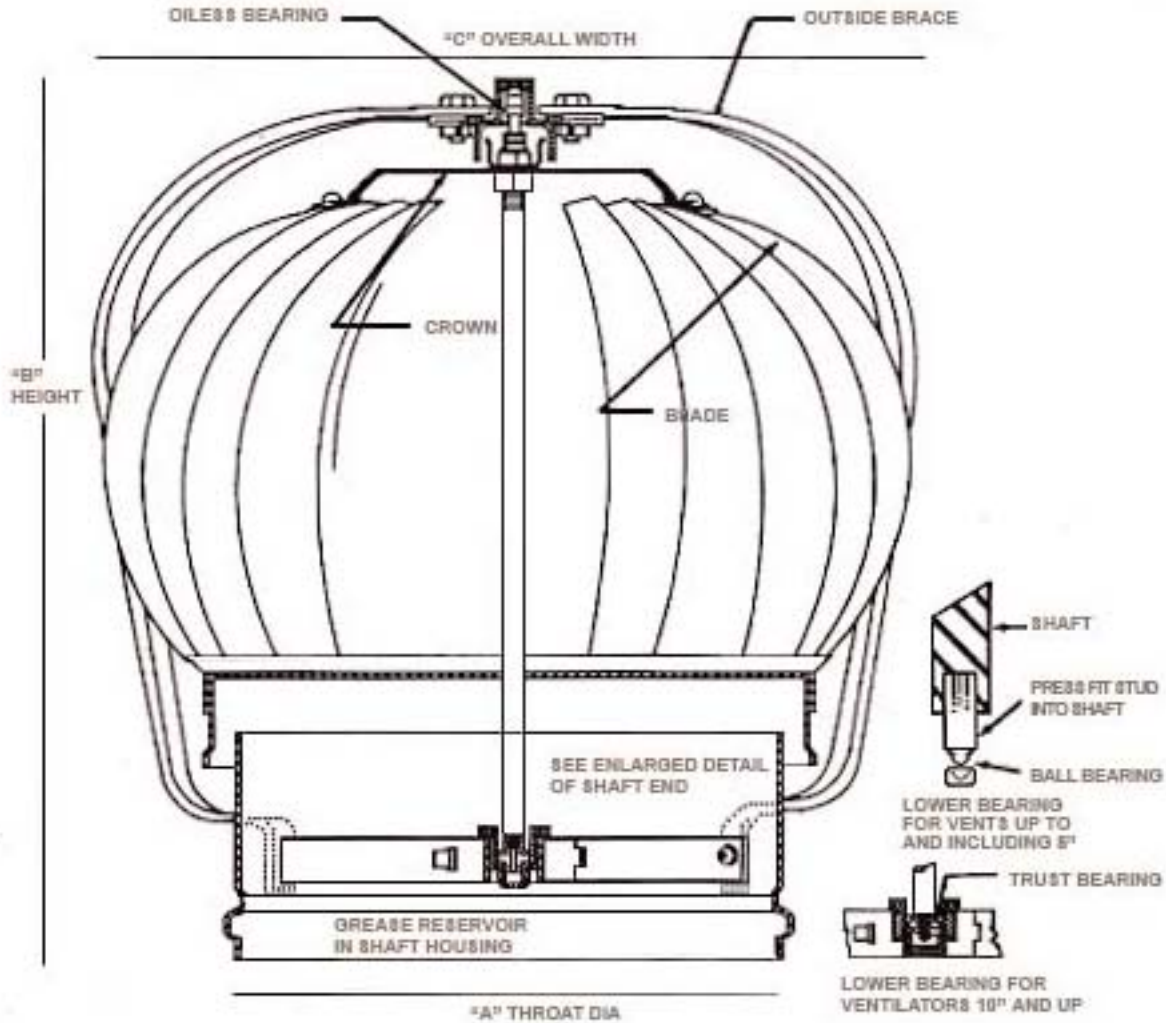


## TURBINE VENTILATORS



### CONSTRUCTION SPECIFICATIONS

"A" THROAT SIZE	GAUGE			NO. OF BRACES	BRACE MATERIAL
	CROWN GALV.	BLADE GALV.	THROAT GALV.		
4	24	28	26	3	ALUMINUM
6	24	28	26	3	ALUMINUM
8	24	28	26	3	ALUMINUM
10	24	28	26	3	ALUMINUM
12	24	28	24	3	ALUMINUM
14	22	26	24	3	ALUMINUM
16	22	26	24	3	STEEL
18	22	26	24	4	STEEL
20	20	26	24	4	STEEL
24	20	26	22	4	STEEL

### DIMENSIONAL AND PERFORMANCE DATA

"A" THROAT SIZE	"B" HEIGHT	"C" OVERALL WIDTH	EXHAUSTED CAPACITY*	APPROX. SHIPPING WEIGHT
4	12	10 1/4	125	5
6	14 1/2	12 3/4	147	7
8	15	14 1/4	255	8
10	16 1/4	16 1/4	425	11
12	17	19	631	13
14	19 3/4	22 3/4	700	21
16	21 3/4	25 1/2	950	31
18	24	29	1200	38
20	25 1/4	31 5/8	1700	46
24	28 1/4	35 3/4	2350	58

\*4 MPH WIND CFM